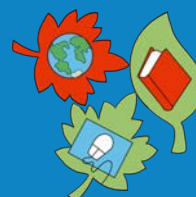




# Deanwood Primary School

## Prospectus





**HAPPY,  
SUCCESSFUL  
AND SAFE**



# Welcome to Deanwood Primary School

Dear Parents and Carers,

Welcome to Deanwood Primary School. We want every child at Deanwood to be happy, successful and safe. We firmly believe that children who are feeling happy and safe in school will be keen to learn and will therefore be far more likely to make good progress both academically and emotionally.

Starting school is a key moment in a child's life. We aim to ensure that all of our children have the best possible start, whether they are joining us in the Foundation Stage or at a later stage in their educational career. As a one-form entry Primary School with a Nursery, we pride ourselves on being a close-knit community of learners where adults and children quickly get to know each other. In our experience, these relationships are particularly helpful when children move from one Year Group to the next as they are already familiar with the other adults in the school.

We provide a high-quality learning environment for all our children. The physical environment is important to every child's learning and development. Our commitment is to provide a bright, well organised and stimulating place for children to learn. We have carpeted areas in classrooms and corridors, and the school

provides the children with plenty of space, both indoors and outdoors. Central to the children's outdoor experiences is a large field. This is used for outdoor games and also at lunchtimes in the summer when the children in KS2 get the opportunity to eat lunch with their friends and enjoy having plenty of space to run around and be active. We are fortunate to have two playgrounds, one for KS1 and one for KS2. Recently, new climbing equipment has been added to the KS1 playground to help to further enhance the playtime experience.

Our key aim is achievement with enjoyment and our children are encouraged to participate in all aspects of learning. We aim to develop caring, confident, responsible individuals who are given the opportunity to reach their full potential.

We encourage visitors to have a look around the school to see the children at work and play.

Yours sincerely,

*Mrs J Wright,*  
**Head of School**



*Watch our Virtual Open Event video*





# Our Ethos and Values

At Deanwood we want everybody to be “Happy, Successful and Safe”. We aim to do this by promoting the fundamental British values of:

- democracy
- the rule of law
- individual liberty
- mutual respect and tolerance of those with different faiths and beliefs

Our assemblies further develop these British Values, as well as addressing the following key themes:

thoughtfulness tolerance caring honesty  
 peace freedom perseverance responsibility  
 patience courage respect happiness simplicity  
 hope trust love co-operation humility  
 friendship understanding unity

Regular Philosophy for Children sessions are used to enable children to further explore the British Values and key themes. In these sessions, children have the opportunity to share their views about topics as wide ranging as: “What is the best colour?”, “Is graffiti art or vandalism?” and “Should girls play football?”. By providing the children with opportunities such as these, we are helping them to feel proud of their identity and to be comfortable to participate in everyday life both in school and also in the wider community.





“

The school's attractive, welcoming and inclusive environment makes a strong contribution to pupils' learning.

”

*Ofsted, 2018*





## Our Curriculum

We offer our children a broad and balanced curriculum covering all National Curriculum subjects. From Year 1 onwards, children have daily maths and English lessons whilst, in Year R, children have daily opportunities to complete activities which will help them to develop their early reading, writing and maths skills. English is taught as a distinct subject but also across the whole curriculum in order for the children to practice their skills. We are fortunate to have an ICT suite with enough computers for one per child. As well as being taught computing skills, classes also have the opportunity to use the ICT suite in other curriculum areas.

As well as the core subjects, we also teach the foundation subjects of: History, Geography, ICT, Design Technology, Music, Art, PE, RE, PHSE, French, Citizenship, Philosophy for Children and Mindfulness (KS2). Teachers try to use a cross curricular approach when planning so that all lessons link to a common theme wherever possible.

## The School Day

	Doors Open	Lessons	Break	Lessons	Lunch	Afternoon Lessons/Assembly	End of Day
KS1/ EYFS	8:30am	8:40am	10:30am	10:45am	12pm	1:00pm	3:30pm (1:10pm Fridays)
KS2	8:30am	8:40am	10:30am	10:45am	12:20pm	1:20pm	3:30pm (1:10pm Fridays)

\*For information about Nursery session times, please visit the school website.



# Outside The Classroom

It is important to be able to reinforce classroom activities with outings to places of educational interest. We aim for every Year Group to participate in educational visits every year. All visits are assessed for risk and will only take place if they comply with all health and safety and safeguarding legislation and are approved by the Head of School.

In the past, we have visited Dover Castle, Leeds Castle, Maidstone Museum, Kent Life, Riverside Country Park and the Imperial War Museum to name just a few. Whenever such activities take place, parents are asked to make a voluntary contribution to the cost of travel and entrance fees. No child will be excluded from these activities on financial grounds.

We are grateful to staff who give up their own time to run a variety of extra-curricular activities. These will depend on the interests of staff and the extra time they can offer. In recent years, those children who attend sporting clubs have had the opportunity to represent the school at the Medway Mini Youth Games and our choir has also taken part in the Christmas carol service at Hempstead Valley Shopping Centre. Separate letters will be sent advising you about clubs run by school.





# Care and Support

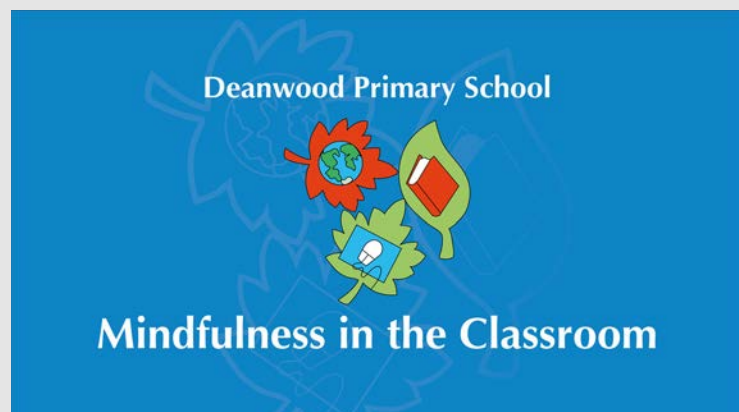
The school is committed to safeguarding and promoting the welfare of children and young people and expects all staff and volunteers to share this commitment.

The school has a Designated Safeguarding Lead (Mrs J. Wright) who is trained to deal with any incidents relating to child protection.

The school has a Safeguarding and Child Protection Policy, which is made available to all parents via our website or from the school office. This contains descriptions of our procedures in more detail. All staff in school have DBS (Disclosure and Barring Service) checks upon appointment. All staff receive safeguarding training as well as updates about topical issues.

We feel that quality first teaching methods are extremely important. However, some children need extra support in order for them to reach their full potential. When this has been identified, the Special Educational Needs Coordinator (SENCO) will work with other staff in order to support children appropriately:

*"I am responsible for ensuring that children with SEN are provided for throughout the school, following the Special Educational Needs Policy (this can be requested from the school office). I work with staff to set targets and plan and review interventions for children with SEN. I also liaise with outside agencies in order to gain more specialist support. Other SENCO responsibilities can be seen in the Special Educational Needs Code of Practice. I am available to contact via the school office if you have any concerns or questions."* (Mrs L. Russell)



*Listen to our teachers discuss Mindfulness in the classroom*





# Starting School

We are passionate about ensuring that children feel happy, secure and settled when beginning their time at Deanwood. We treat each child as an individual, understanding that all children learn at different rates and in different ways. With this in mind, we work hard to get to know each child in order to determine how best to support them to ensure they can achieve their very best and make the progress they are capable of at their level.

When pupils first join us, we focus primarily on the prime areas of learning:

- Communication and Language
- Physical Development
- Personal, Social and Emotional Development

These prime areas support pupils to become resilient and confident independent learners and lay the foundations for their success in the other specific areas of learning: Literacy, Mathematics, Understanding the World and Expressive Arts and Design.

Our learning environment supports pupils to play and explore, create and think critically and engage in active learning – developing the characteristics of effective learning in the Early Years. We pride ourselves on ensuring that pupils have the same opportunities both inside and outside. We document children's learning using Tapestry, a programme which allows parents/carers to follow and contribute towards their child's unique learning journey.

When pupils come towards the end of the Early Years Foundation Stage, we work hard to prepare them for the next stage of their journey through Deanwood. This is done through numerous visits to their new classroom, as well as activities led by their new Class Teacher and Teaching Assistant. Ensuring a successful transition means that pupils enter into Year One ready to begin the next step in their learning journey.

# School Uniform

Maintaining a high standard of appearance through the wearing of uniform is a crucial element of our school. Uniform gives children pride in the school, puts them in the right frame of mind for work and makes them feel part of our community. Elements of our uniform which incorporate the school emblem are available to purchase via [www.myclothing.com](http://www.myclothing.com). Alternatively, non-school emblem uniform can be purchased at any clothing store. Our uniform is as follows:

- Navy blue sweatshirt/cardigan with or without logo
- Pale blue polo shirt with or without logo
- Black, navy blue or grey trousers, skirt or pinafore
- Socks – white, grey or navy blue



NB: In the summer, children are welcome to wear a pale blue or navy blue school summer check dress or black, navy blue or grey school long shorts.

## PE and Games Kit:

On their PE days, children will be required to come into school wearing an appropriate PE kit. Plimsolls will be worn for inside games, or they may be bare foot. Trainers can be worn for outdoor PE. PE kit should consist of a round neck plain t-shirt in white and PE shorts in navy blue or black. Plain navy blue or black tracksuit bottoms and jumpers are permitted in the winter.

## Footwear:

We require all children to wear black school shoes - no trainers, no heels and no boots. Flashing lights on shoes are not acceptable as they can be distracting.

## Hair styles:

Children's hairstyles should be smart and appropriate for school. For the safety and welfare of the children, long hair should be tied back with a plain hair band.





“ I have been so impressed with the sheer acceptance and dedication of staff at this school in helping my amazing SEN child to access an education in a supportive and caring environment. ”

*Parent, 2022*





“All the teachers care about their students and want them to succeed. Thank you for always being there and teaching extremely well.”

*Child, 2019*



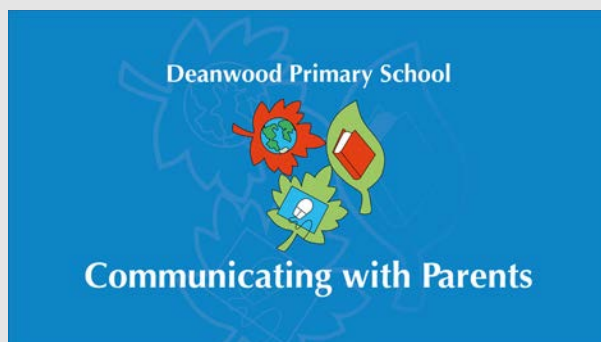


# Community Links

The school is very fortunate to have an active group of staff, parents and friends dedicated to raising money for the school through social, fun and sponsored events.

Over the years, our PTA have raised a considerable amount of money which has been used to provide a range of additional resources for the school and ultimately to benefit the children. Past projects have included: the installation of tyre parks and playground equipment in our playgrounds for the children to play on; new projectors for the hall and classrooms; new chairs for the hall; new reading books; and wet playtime games for the children. All of these have proven to be extremely popular with the children. The PTA is always looking for additional help and volunteers are always welcome. So, if you have some spare time on your hands and would like to become involved, please give the school office a call as any help is greatly appreciated!

We also have a Local Advisory Board (Governing Body). The Governors support the Leadership Team in achieving the school's aims and objectives, usually serving a four-year term on the Local Advisory Board. The Local Advisory Board meets three times a year. Governors are not responsible for the day to day running of the school or decisions regarding individual pupils, but have a variety of tasks, including, most importantly, challenging the Head of School/Leadership Team on how they are performing and carrying out their roles.



*Hear what teachers have to say about communication*



# Admissions and Extra Information

A child can apply for a reception class place in the academic year following their fourth birthday. Any child who is four before 31st August will be admitted on the 1st September in common with all schools locally.

Deanwood School is currently a one form entry school.

For children entering Year R there is an induction programme in the term prior to their entry. This helps familiarise the children with the school environment and their teacher. For those parents requesting admission for their children into other year groups or at any other times of the year, please contact the school as this will depend on the availability of places in the particular year group requested.

For information about Nursery admissions, please visit the school website.

## **Attendance:**

Children are legally required to attend school unless prevented from doing so by illness or another valid reason. For this reason, we encourage parents to try to arrange any doctor or dentist appointments after school or in the late afternoon if possible. The Head of School is unable to grant any holiday requests during term time unless there are exceptional circumstances. Lateness is also discouraged as it results in an interrupted start to your child's day. Please consult our attendance policy for further details.





## *Working together to build a community of successful learners*

We are a part of The Howard Academy Trust - a larger community of schools with a shared moral purpose; to make a positive difference to the lives of the young people in our community.

As a Trust, we currently comprise of Medway secondary and primary schools, and one secondary school in Faversham.

Learning and growth are at the heart of THAT ethos. We recognise and value the unique talents and expertise within our community and aim to create a culture of dignity, respect and ambition, where all can thrive. This is achieved through:

Excellent teaching and learning that promotes inclusivity;

Regular opportunities for collaborative CPD to ensure best practice across academies;

A proactive network for joint working across academies, for staff at various career stages;

The highest standards of behaviour and conduct achieved through clear expectations and positive relationships;

The unique character of each academy is valued and contributes to the THAT whole Trust ethos;

Shared whole trust values of dignity, respect and ambition;

High aspirations for all involved with the Trust and a solutions led approach;

Each academy is a hub for its local community and families;

Facing outwards and working in collaboration with other organisations and stakeholders;

A centralised team that allows academies leaders to focus on their core purpose of education.

We are enormously proud of our schools and of the leaders, governors, teachers and support staff who every day ensure our pupils enjoy and make good progress in their learning.



Find out more about our Trust at: [www.thatrust.org.uk](http://www.thatrust.org.uk)

## Contact Us

**Address:**

Deanwood Primary School,  
Long Catlis Road,  
Parkwood,  
Rainham,  
Kent,  
ME8 9TX

**Office Email:**

[office@deanwood.medway.sch.uk](mailto:office@deanwood.medway.sch.uk)

**School Phone Number:**

01634 231901

